

CECR5 Antibody (Center)
Affinity Purified Rabbit Polyclonal Antibody (Pab)
Catalog # AP8560c**Specification**

CECR5 Antibody (Center) - Product Information

Application	FC, IHC-P, WB,E
Primary Accession	Q9BXW7
Reactivity	Human
Host	Rabbit
Clonality	Polyclonal
Isotype	Rabbit IgG
Calculated MW	46321
Antigen Region	164-190

CECR5 Antibody (Center) - Additional Information**Gene ID** 27440**Other Names**

Cat eye syndrome critical region protein 5, CECR5

Target/Specificity

This CECR5 antibody is generated from rabbits immunized with a KLH conjugated synthetic peptide between 164-190 amino acids from the Central region of human CECR5.

Dilution

FC~~1:10~50

IHC-P~~1:50~100

WB~~1:1000

E~~Use at an assay dependent concentration.

Format

Purified polyclonal antibody supplied in PBS with 0.09% (W/V) sodium azide. This antibody is purified through a protein A column, followed by peptide affinity purification.

Storage

Maintain refrigerated at 2-8°C for up to 2 weeks. For long term storage store at -20°C in small aliquots to prevent freeze-thaw cycles.

Precautions

CECR5 Antibody (Center) is for research use only and not for use in diagnostic or therapeutic procedures.

CECR5 Antibody (Center) - Protein Information**Name** HDHD5 ([HGNC:1843](#))

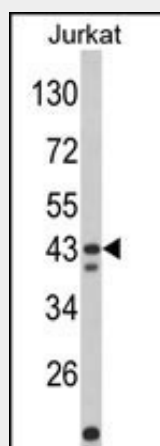
Tissue Location

Widely expressed.

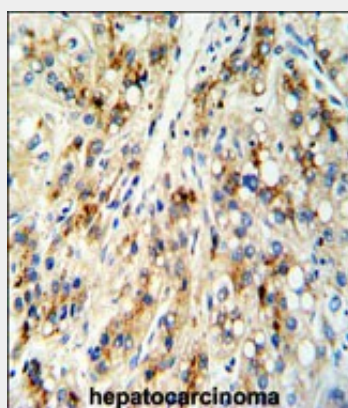
CECR5 Antibody (Center) - Protocols

Provided below are standard protocols that you may find useful for product applications.

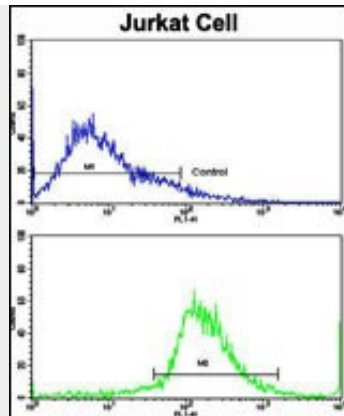
- [Western Blot](#)
- [Blocking Peptides](#)
- [Dot Blot](#)
- [Immunohistochemistry](#)
- [Immunofluorescence](#)
- [Immunoprecipitation](#)
- [Flow Cytometry](#)
- [Cell Culture](#)

CECR5 Antibody (Center) - Images

Western blot analysis of CECR5 Antibody (Center) (Cat. #AP8560c) in Jurkat cell line lysates (35ug/lane). CECR5 (arrow) was detected using the purified Pab.



Formalin-fixed and paraffin-embedded human hepatocarcinoma reacted with CECR5 Antibody (Center), which was peroxidase-conjugated to the secondary antibody, followed by DAB staining. This data demonstrates the use of this antibody for immunohistochemistry; clinical relevance has not been evaluated.



Flow cytometric analysis of jurkat cells using CECR5 Antibody (Center)(bottom histogram) compared to a negative control cell (top histogram). FITC-conjugated goat-anti-rabbit secondary antibodies were used for the analysis.

CECR5 Antibody (Center) - References

Footz,T.K., et.al., Genome Res. 11 (6), 1053-1070 (2001)